

TECHNICAL DATA - MARINE

High cabinets

The range of marine neutral furniture includes various types of tables, cabinets, shelves, trolleys and racks. Thanks to the flexible modular construction they are easy to combine to create customised solutions that suits all requirements. All units are made of stainless steel and comply with the hygiene and other standards for professional kitchens.



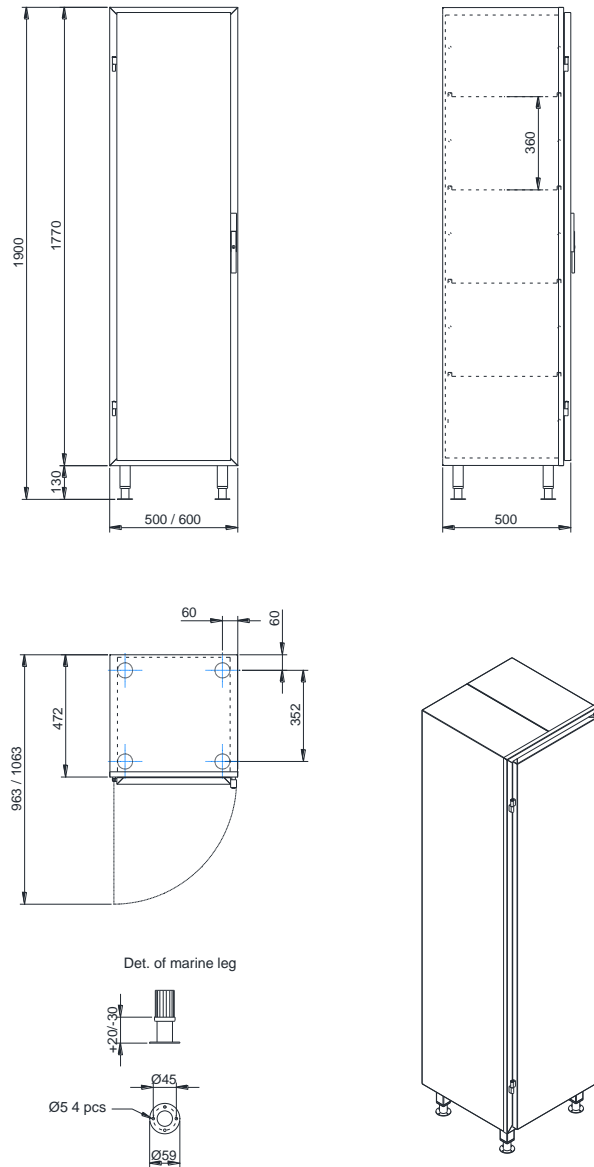
GENERAL

- Easy to clean stainless steel construction
- Marine locking latch with a key lock
- Four height adjustable shelves
- Special executions and sizes available on request
- Wide range of accessories

TECHNICAL FEATURES

- Double body and doors s/s t=0,80mm
- Detachable shelves s/s t=1,00mm
- Welded construction
- Two wall fixing points
- Adjustable legs with bolt holes
- S/s brush exterior

High cabinet 500



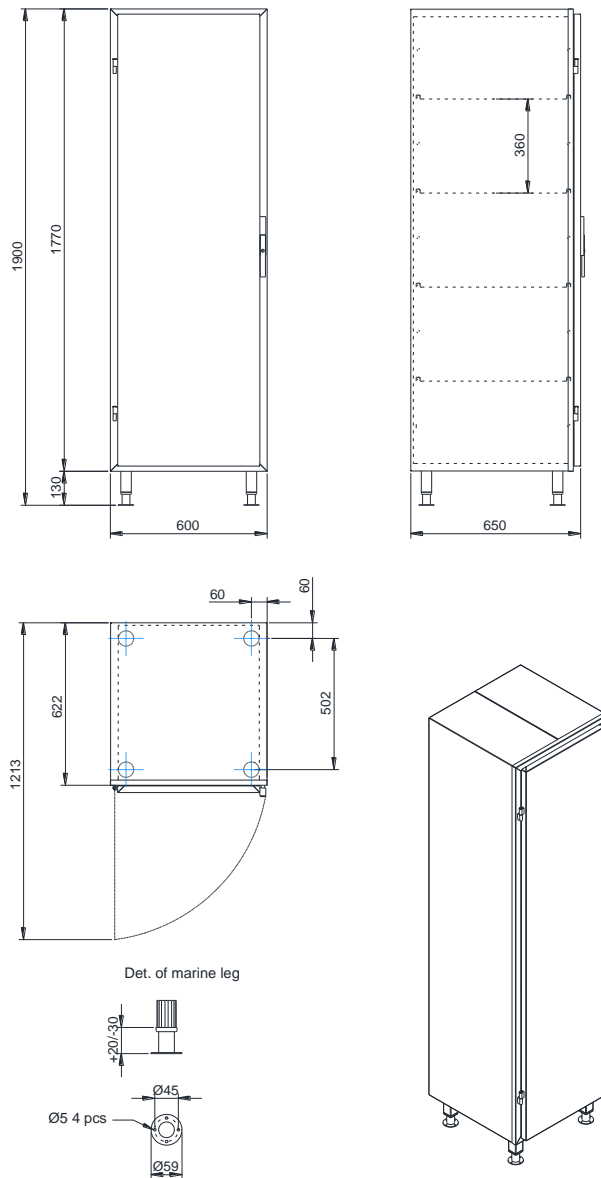
Left hinged version shown

TECHNICAL DATA				
Model	N-022L-5x5	N-022R-5x5	N-022L-6x5	N-022R-6x5
External dimensions w x d x h mm	500x500x1900	500x500x1900	600x500x1900	600x500x1900
Hinges	left	right	left	right
Net weight kg	57	57	64	64
Internal volume dm ³	348	348	423	423
Unit volume m ³	0,62	0,62	0,73	0,73
Unit dimensions mm				
height	2050	2050	2050	2050
depth	550	550	550	550
width	550	550	650	650

Due to continuous product development we reserve the right to technical changes without notice.



High cabinet 650



Left hinged version shown

TECHNICAL DATA		
Model	N-022L-6x6,5	N-022R-6x6,5
External dimensions w x d x h mm	600x650x1900	600x650x1900
Hinges	left	right
Net weight kg	75	75
Internal volume dm ³	565	565
Unit volume m ³	0,93	0,93
Unit dimensions mm		
height	2050	2050
depth	700	700
width	650	650

Due to continuous product development we reserve the right to technical changes without notice.

